



GARBAGE DISPOSAL
LGD1

GARBAGE DISPOSAL
LGD2

GARBAGE DISPOSAL
LGD3

INSTALLATION INSTRUCTIONS



IMPORTANT!

Turn off electric power at fuse box or circuit breaker before installation!

PACKING LIST

Part Number	Quantity	Description
LGD-01	1	Garbage Disposal
LGD-02	1	Stopper
LGD-03	1	Sink Flange
LGD-04	1	Rubber Gasket
LGD-05	1	Lower Flange
LGD-06	1	Upper Mounting Ring
LGD-07	1	Sink Baffle
LGD-08	1	Lower Mounting Ring
LGD-09	3	Sink Flange Bolts
LGD-10	1	Hex Key
LGD-11	1	Discharge Tube
LGD-12	1	Discharge Gasket
LGD-13	1	Discharge Flange
LGD-14	2	Discharge Bolts



LGD-01
Garbage Disposal



LGD-02
Stopper



LGD-03
Sink Flange



LGD-04
Rubber Gasket



LGD-05
Lower Flange



LGD-06
Upper Mounting Ring



LGD-07
Sink Buffer



LGD-08
Lower Mounting Ring



LGD-09
Sink Flange Bolts



LGD-10
Hex Key



LGD-11
Discharge Tube



LGD-13
Discharge Flange

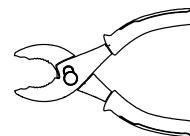
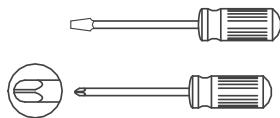
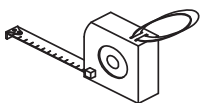


LGD-12
Discharge Gasket



LGD-14
Discharge Bolts

TOOLS REQUIRED FOR INSTALLATION (NOT INCLUDED)



Note: Other tools may be required

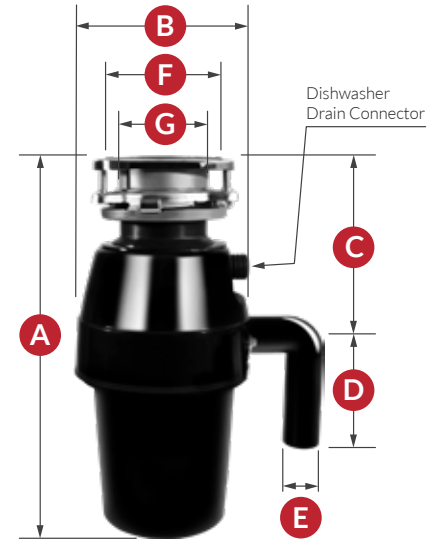


GARBAGE DISPOSALS LGD1, LGD2, LGD3

DIMENSIONS/TECHNICAL DATA

Model	A	B	C	D	E	F	G
LGD1	13 1/2"	6 7/8"	6 7/8"	4 1/2"	1 1/2"	4 1/2"	3 1/2"
LGD2	14 3/8"	6 7/8"	6 7/8"	4 1/2"	1 1/2"	4 1/2"	3 1/2"
LGD3	16 3/8"	7 1/4"	8 1/2"	4 1/2"	1 1/2"	4 1/2"	3 1/2"

- A** Overall unit's height
- B** Overall unit's width
- C** Distance from bottom of sink bowl to center line of discharge outlet
- D** Distance from center line of discharge outlet to edge of discharge tube
- E** Diameter of discharge tube
- F** Diameter of sink flange
- G** 3 1/2" standard sink openings



ATTENTION! Dimensions may vary by up to 3/8". It is highly recommended to pull all dimensions of actual model for installation and measuring purposes.

ATTENTION! The measurements in inches are rounded to the nearest 1/8"

TECHNICAL DATA

Models:	LGD1	LGD2	LGD3
Motor Power	1/2 hp	3/4 hp	1 hp
Installation Type	Plug-in or hardwire	Plug-in or hardwire	Plug-in or hardwire
Type of Feed	Continuous	Continuous	Continuous
Motor	Single Phase	Single Phase	Single Phase
Voltage	110~120V	110~120V	110~120V
Frequency	60 Hz	60 Hz	60 Hz
Power	84W	55W	63W
Rotation Speed	2400 rpm	1900 rpm	1250 rpm
Current (Average Unload)	0.7A	0.45A	0.52A
Lubrication	Permanently lubricated bearings	Permanently lubricated bearings	Permanently lubricated bearings
Shipping weight	11lbs	12lbs	15lbs
Grinding Capacity	26.02oz.+/-	26.02oz.+/-	26.02oz.+/-
Motor Protection Overload	Manual Reset Button	Manual Reset Button	Manual Reset Button
Drain Connection Diameter	1 1/2" Standard	1 1/2" Standard	1 1/2" Standard
Dishwasher Drain Connection	Yes (Optional)	Yes (Optional)	Yes (Optional)



BEFORE INSTALLATION AND/OR OPERATING LESSCARE GARBAGE DISPOSAL YOU MUST READ AND UNDERSTAND ALL INSTRUCTIONS, SAFETY RULES, WARNINGS, AND OTHER NOTES OF THIS OWNER'S MANUAL



SAFETY RULES

- Turn off electric main power at fuse box or circuit breaker before installation!
- Keep children in a distance when operating appliance
- Do not put fingers or hands into a waste garbage disposal, do not use sink to wash hair, threads and other objects which may cause tangles
- Processing material other than food wastes in this machine may cause personal injury or property damage
- Turn off electric main power at fuse box or circuit breaker before clearing jam or pressing reset button
- Use hex key tool to loosen a jam (See figure A in Jam Releasing section)
- Never use hands to remove any objects from garbage disposal
- Use long-handled tongs or any applicable tools to remove objects from garbage disposal
- Always keep Sink Baffle in sink flange when you operate garbage disposal to prevent entry or ejection of material and water
- Never put such objects into garbage disposal, such as metal, cans, clam or oyster shells, glass, plastic, hot cooking oil or other hot liquids, drain cleaners
- Dispose following materials may cause damage to garbage disposal: paints, solvents, household cleaners and chemicals, automotive fluids, plastic wrap
- Leave stopper in place to prevent any objects falling into garbage disposal when garbage disposal does not operating



FIRE HAZARD!

Do not store any flammable materials near garbage disposal!



PERSONAL INJURY WARNING! Do not position your head or body under garbage disposal when installing or removing garbage disposal.

GROUNDING INSTRUCTIONS



ELECTRICAL SHOCK WARNING! All wiring must comply with local electrical codes. This unit must be properly grounded, consult a licensed electrician with concerns.

- Turn off electric main power at fuse box or circuit breaker before installation or servicing garbage disposal.
- This garbage disposal must be connected to a grounded, metal, permanent wiring system
- **Improper connection of equipment-grounding conductor can result in a risk of electric shock and/or fire**
- For plug-in installation an outlet must be properly installed and grounded in accordance with all local codes

FOR PERMANENTLY CONNECTED GARBAGE DISPOSALS:
This garbage disposal must be connected to a grounded, metal, permanent wiring system.

STEP 1
Disassemble
New Garbage
Disposal Unit

Insert wrench (or screwdriver) into one mounting lug. Turn mounting assembly counter-clock wise to remove mounting assembly from garbage disposal body. Loosen three mounting screws.



STEP 2
Install Sink
Flange

Place rubber gasket on top of sink hole. Insert sink flange into sink hole and push it down.



STEP 3
Attach Mounting
Assembly to Sink Flange

Working from under sink, hold sink flange. Insert lower flange and then upper mounting ring over sink flange. Then turn upper mounting ring pass ridge of sink flange. Then tighten three sink flange bolts evenly and firmly against lower flange.



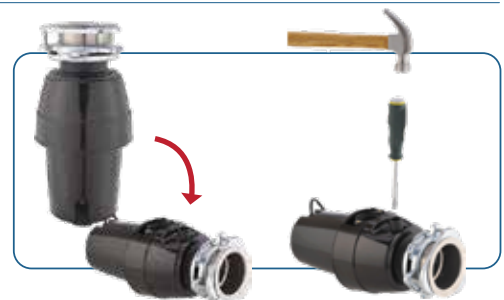
STEP 4
Prepare Dishwasher Drain Connection (If Needed)

CAUTION:

If you do not need to connect dishwasher drain, proceed from **step 5**

IMPORTANT:

do not remove dishwasher drain plug if garbage disposal will not be connected to a dishwasher.



Use a screwdriver to knock out and remove dishwasher drain plug from garbage disposal

STEP 5

Connect Garbage Disposal to Mounting Assembly

IMPORTANT: Check and remove any objects from garbage disposal's grinding chamber before mounting garbage disposal. Failure to do so may cause complete mechanical breakdown of garbage disposal.



PERSONAL INJURY WARNING! Do not position your head or body under garbage disposal when installing or removing garbage disposal.



Hang garbage disposal by aligning 3 mounting tabs with slide-up ramp on upper mounting ring with lower mounting ring than turn lower mounting ring clockwise until all 3 tabs lock over 3 tabs.

STEP 6

Connect Discharge Tube

Slide discharge flange on to discharge tube and place rubber gasket into discharge outlet. Screw in two discharge bolts to secure discharge flange and discharge tube with garbage disposal. Connect to your plumbing drain



STEP 7

Connect Dishwasher Drain

Connect dishwasher's drain line to garbage disposal dishwasher drain connector

IMPORTANT: Make sure that dishwasher drain plug on garbage disposal has been removed at **Step 4**



STEP 8

Test For Any Leakage

Insert sink stopper into sink flange opening, fill water into sink and check mounting assembly for any leaks. Remove sink stopper and let the water drain into garbage disposal. Be sure that discharge tube, dishwasher drain connector do not leak. Also, run dishwasher cycle and repeat Step 8 again.



OPERATING INSTRUCTIONS

Attention! Read Safety Rules before operating garbage disposal! (Refer to Safety Rules section)

- 1) Insert sink stopper into sink flange opening, fill water into sink
- 2) Remove stopper from sink flange opening and turn on water
- 3) Turn on garbage disposal
- 4) Insert food waste into garbage disposal while the water is running
- 5) After grinding is complete, turn off garbage disposal and run water for a few seconds to flush drain line
- 5) Grinding is complete only when motor operation is heard (not grounding sound)

MAINTENANCE

- Motor of disposal has been permanently lubricated; there is no need to apply additional lubricant
- Clean garbage disposal with neutral mild detergents every three months
- Do not pour any chemicals into disposal, chemicals cause corrosion to garbage disposal parts
- It is normal if minerals of water form a rusty-like layer on stainless steel grinding disc
- Regularly inspect garbage disposal and drain plumbing fittings for water leaks, as water leaks may cause property damage and flood. LessCare can not be held responsible for property damage as result of water leakage or any other damages caused by LessCare product

JAM RELEASE

When garbage disposal is jammed in operation, protection system will automatically trip reset button

- Turn off electric main power at fuse box or circuit breaker, turn water off
- Using tongs, remove all garbage from grinding chamber
- Insert hex key in to the bottom of garbage disposal (Figure A) Rotate it back and forth until it makes 5-6 full rotations or as many times as needed to remove jammed objects (Figure A)
- Gently press reset button on garbage disposal (Figure B)
- Run water and turn on garbage disposal



Figure A

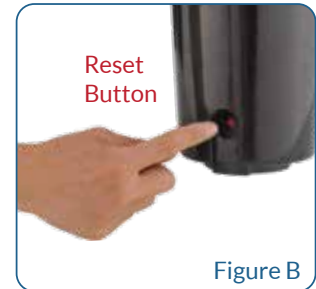


Figure B



INSTALLATION OF LESSCARE PRODUCTS BY AN INEXPERIENCED INSTALLER MAY RESULT PERSONAL INJURY OR DEATH!



INSTRUCTIONS THAT, IF IGNORED COULD RESULT IN DEATH OR SERIOUS INJURY CAUSED BY INCORRECT HANDLING OR INSTALLATION OF THE PRODUCT. THESE INSTRUCTIONS MUST BE OBSERVED FOR SAFE INSTALLATION.

LessCare is not responsible for local code compliance. Building and plumbing codes may vary from state-to-state in accordance to your location. LessCare is not responsible for providing any compliance certifications.

ATTENTION! Responsibility for compliance with your local code requirements **are excluded from warranty**

ATTENTION! This limited warranty is voids on any commercial installation

LessCare products must be installed by a fully insured and licensed professional only. Installation of any LessCare product by anyone other than fully insured and licensed professionals shall **void limited warranty**. LessCare recommends that such licensed professionals have experience in the installation of products.

Retain these installation instructions for future reference!

LessCare reserves the right to modify this installation instructions at any time.
It is a customer's sole responsibility to inquiry for the updates of the installation instructions.